

EN ELECTRIC WINCH RELIABILITY



Equipped with Novawinch EN electric winch, you got a reliable helper to get your recovery job done quickly. EN electric winch is designed to satisfy heavy-duty recovery application requirements, like flatbed trailer, fire truck, or city utility vehicles. EN electric winch available from 2500kg to 6100kg, 12V models can be customized as requirement.

OPTIONAL ACCESSORIES:



Wireless control



Wire rope tensioner



Winch accessory kit

Features:

1. Dependable high-torque series-wound 24V DC electric motor;
2. IP67, 450A sealed contactor with anti-high temperature silver contacts, stable and with longer life time;
3. 4-stage planetary gear with high strength hardened steel, provides tough performance and efficiency;
4. Automatic self-lock braking in the drum, provide 100% full load brake performance;
5. Pull and turn clutch, simple operation with ergonomic design;
6. Meets EN 14492-1 standard;



EN 14492-1 requirements:

1. The first layer of wire rope safety factor (breaking strength/rated pulling) must at least 2 times of winch rated line pull.
2. Space between drum and tie bar should be 1.5 times of the wire rope diameter;
3. $(\text{Drum diameter} + \text{rope diameter}) / \text{rope diameter} \geq 10$;
4. Two wire rope mounting holes on the drum for safety operation;
5. Winch mechanical structure reach 1.25 times of winch rated line pull.



SPECIFICATIONS:

	EN2500	EN3600	EN4300	EN6100
Rated line pull	5511lbs(2500kgs)single line	7937lbs(3600kgs)single line	9480lbs(4300kgs)single line	13500lbs(6100kgs)single line
Motor(Series wound)	DC 24V: 6.8hp/5kW	DC 24V: 8.2hp/6.2kW	DC 24V: 8.4hp/6.3kW	DC 24V: 11.8hp/8.7kW
Gear train	3 stage planetary	4 stage planetary		
Gear ratio	196:1	516:1		
Clutch	Rotating ring gear			
Braking action	Automatic in the drum			
Fairlead	4-way roller fairlead			
Wire rope	9/32"×105'(7mm×32m)	5/16"×121'(8.0mm×37m)	3/8"×111.5'(9.2mm×34m)	15/32"×129.3'(12mm×33m)
Drum size	2.48"×8.8"(63mm×224mm)	3.46"×8.66"(88mm×220mm)		4.6"×8.2"(117mm×208m)
Dimensions	21.57"×6.2"×10.3" (548mm×158mm×260mm)	25.3"×8.46"×11.34" (642mm×215mm×288mm)		25.1"×11.97"×11.34" (638mm×304mm×288mm)
Bolt pattern	10"×4.5"(254mm×114.3mm)	10"×4.5"(254mm×114.3mm)	10"×6.5"(254mm×165.1mm) 10"×8.5"(254mm×215.9mm)	
Net Weight	91.6lbs(41.6kg)	150lbs(68kg)	154lbs(70kg)	165lbs(75kg)

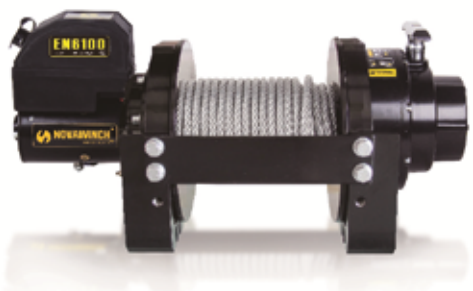
■ **EN2500**



■ **EN3600-4300**



■ **EN6100**



24VDC Line speed and motor current (first layer)

Line pull(kg/lbs)				Line speed (mpm/fpm)				Motor current (amps)			
EN2500	EN3600	EN4300	EN6100	EN2500	EN3600	EN4300	EN6100	EN2500	EN3600	EN4300	EN6100
0/0	0/0	0/0	0/0	5.1/16.7	3.5/11.5	3.2/10.5	4.0/13.0	70	50	50	40
1814/4000	1814/4000	1814/4000	1814/4000	2.4/7.9	2.4/7.9	2.4/7.9	2.7/8.9	90	100	100	90
2500/5511	2722/6000	2722/6000	3622/8000	2.2/7.2	2.1/6.8	2.0/6.6	1.8/5.9	130	130	150	180
—/—	3600/7937	3622/8000	6100/13500	—/—	2.0/6.6	1.5/4.9	1.4/4.6	—	150	180	300
—/—	—/—	4300/9480	—/—	—/—	—/—	1.3/4.3	—/—	—	—	200	—

Line pull and cable capacity

Layer of cable	Rated line pull per layer(kg/lbs)				Cable capacity per layer(m/ft)			
	EN2500	EN3600	EN4300	EN6100	EN2500	EN3600	EN4300	EN6100
1	2500/5511	3600/7937	4300/9480	6100/13500	6.8/22.4	7.8/25.5	6.7/21.9	6.4/21.3
2	2222/4900	3084/6800	3810/8400	5175/11400	14.9/48.7	17/55.7	14.7/48.2	14.1/46.5
3	1905/4200	2676/5900	3266/7200	4462/9830	23.9/78.4	27.5/90.2	24/78.7	23/75.7
4	1678/3700	2404/5300	2858/6300	3930/8650	32/105	37/121	34/111.5	33/108.8